



Up-to-date Questions and Answers from authentic resources to improve knowledge and pass the exam at very first attempt. ----- Guaranteed.



JN0-611 Dumps
JN0-611 Braindumps
JN0-611 Real Questions
JN0-611 Practice Test
JN0-611 Actual Questions



Juniper

JN0-611

Cloud, Professional (JNCIP-Cloud) Certification



<https://killexams.com/pass4sure/exam-detail/JN0-611>

Question: 691

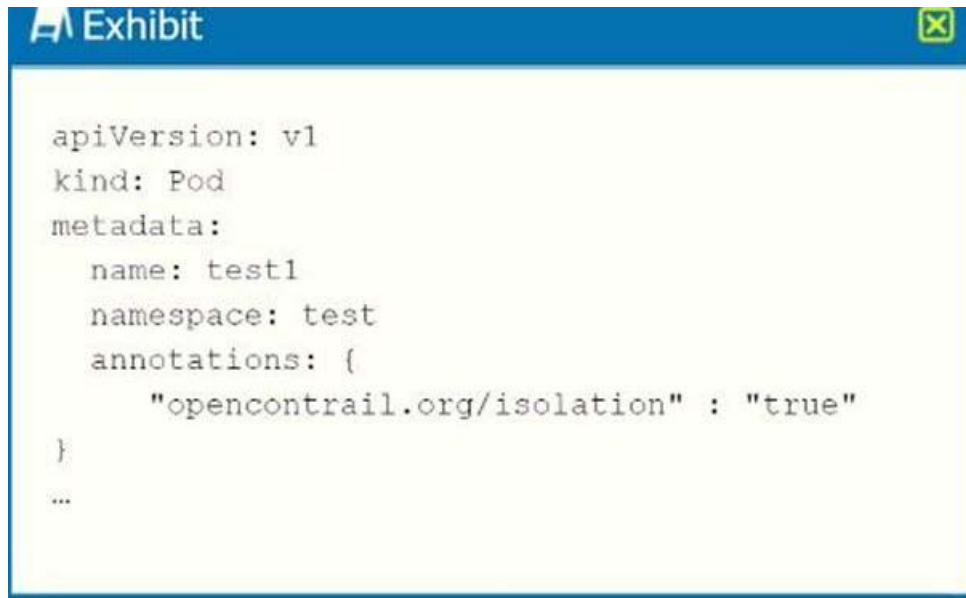
Which two features of Kubernetes are supported by the Contrail CNI? (Choose two.)

- A. black list rules
- B. network isolation
- C. service chaining
- D. pod traffic shaping

Answer: A,D

Question: 170

Exhibit.

An exhibit window with a blue header bar containing the word "Exhibit" and a close button. The main area is a light yellow rectangle containing a YAML manifest for a Pod. The manifest specifies the API version as v1, the kind as Pod, and the metadata including the name "test1", the namespace "test", and an annotation "opencontrail.org/isolation" with a value of "true".

```
apiVersion: v1
kind: Pod
metadata:
  name: test1
  namespace: test
  annotations: {
    "opencontrail.org/isolation" : "true"
  }
...
```

Referring to the exhibit, which two statements are correct when deploying the OpenShift pod? (Choose two.)

- A. A pod is created with the name "test1".
- B. Pods are reachable by pods in a different namespace.
- C. Pods are reachable only by pods in the same namespace.
- D. A pod is created with the name "test".

Answer: A,B,D

Question: 171

You are deploying Contrail Enterprise Multicloud in your environment. You must securely connect your private resources with publicly-hosted resources.

What must be included in this scenario?

- A. AppFormix
- B. Contrail Security
- C. service chaining

D. Multicloud-Gateway

Answer: D

Question: 172

Exhibit.

The screenshot shows the AWS VPC console interface. At the top, there's a blue header with the word 'Exhibit' and a close button. Below this, the 'Private Subnet CIDR' section is visible, containing two rows of configuration. The first row shows 'CIDR block*' as '10.0.1.0/24' and 'Availability zone' as '1'. The second row shows 'CIDR block*' as '10.0.2.0/24' and 'Availability zone' as '2'. There are '+ Add' and '- Remove' buttons for each row. Below this, the 'Security Groups' section is expanded, showing two rules. The first rule is 'Allow-all-inbound' with 'Direction' set to 'Egress', 'CIDR Block' set to '0.0.0.0/0', and 'Protocol' set to 'ICMP'. The second rule is 'Allow-all-outbound' with 'Direction' set to 'Egress', 'CIDR Block' set to '0.0.0.0/0', and 'Protocol' set to 'ANY'. Both rules have empty 'From L4 port' and 'To L4 Port' fields.

You are using Contrail Command to configure AWS. You are unable to ping your VMs within the instance you created.

Referring to the exhibit, what is the problem?

- A. You must change the protocols allowed in the "Allow-all-inbound" rule to "ANY".
- B. Your subnets are in different availability zones.
- C. You must change the direction of the "Allow-all-inbound" rule to "Ingress".
- D. Your subnets for "Availability zone 1" and "Availability zone 2" must be the same.

Answer: C

Question: 173

Into which namespace are the Contrail system components deployed in an OpenShift cluster?

- A. contrail-system
- B. openshift-sdn
- C. networking

D. default

Answer: D

Question: 174

Which Contrail daemon set is responsible for listening to the Kubernetes API messages and creating resources in the Contrail API database?

- A. contrail-controller-config
- B. contrail-configdb
- C. contrail-analytics-alarm
- D. contrail-Jcube-manager

Answer: A

Question: 175

What is a core component of an AWS cloud environment?

- A. a resource group
- B. a VPC
- C. a VNET
- D. a vRouter

Answer: A

Question: 176

You are deploying resources within Microsoft Azure integrated with Contrail.

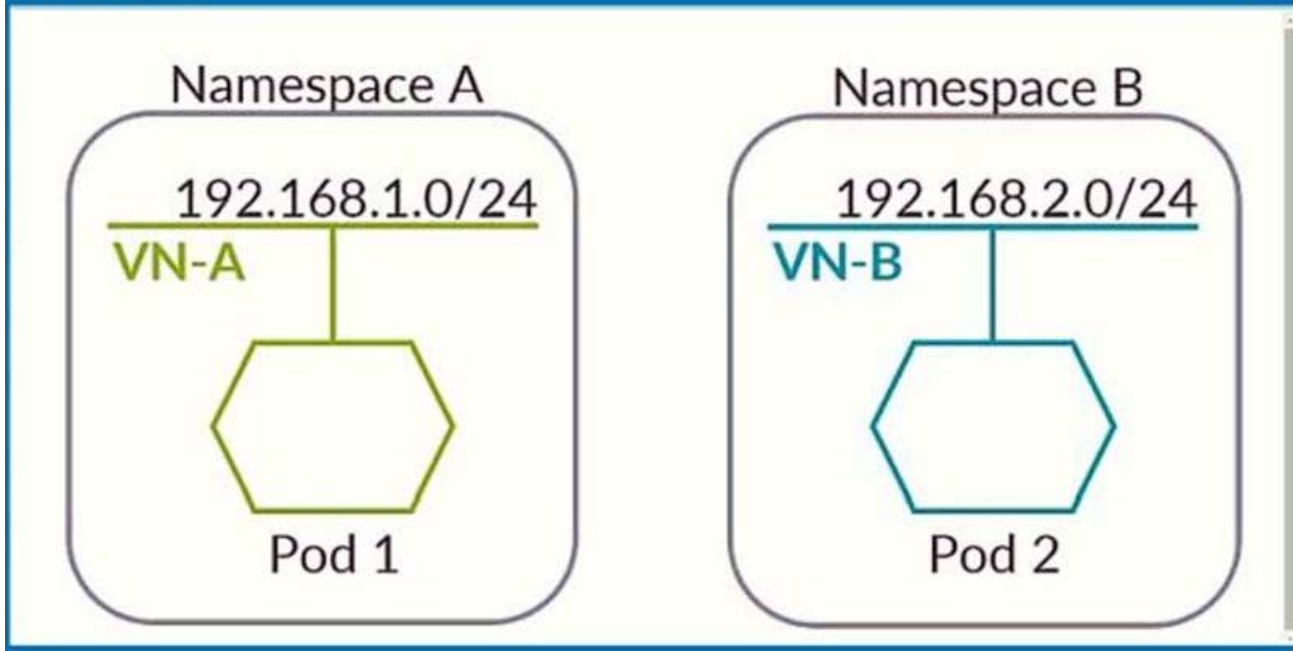
Which set of components must be defined in this scenario?

- A. region, VPC, security groups, EC2 instance details
- B. region, VNET, security groups, EC2 instance details
- C. region, resource group, VPC, security groups, instance details
- D. region, resource group, VNET, security groups, instance details

Answer: A

Question: 177

Exhibit.



Your company uses Kubernetes as an orchestrator integrated with Contrail. You are asked to create the networks shown in the exhibit and enable communication between Pod 1 and Pod 2.

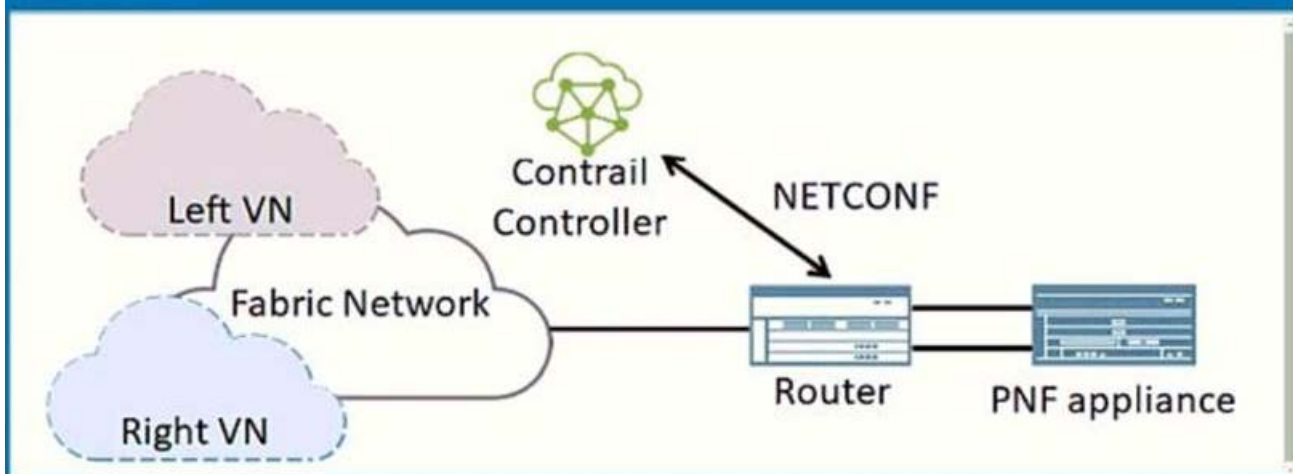
Which three steps must be performed in this scenario? (Choose three.)

- A. Create VN-A and VN-B
- B. Apply a created network policy.
- C. Assign IP addresses to the pods.
- D. Update permissions in the security group. Create Namespace A and Namespace B

Answer: A,B

Question: 178

Exhibit.



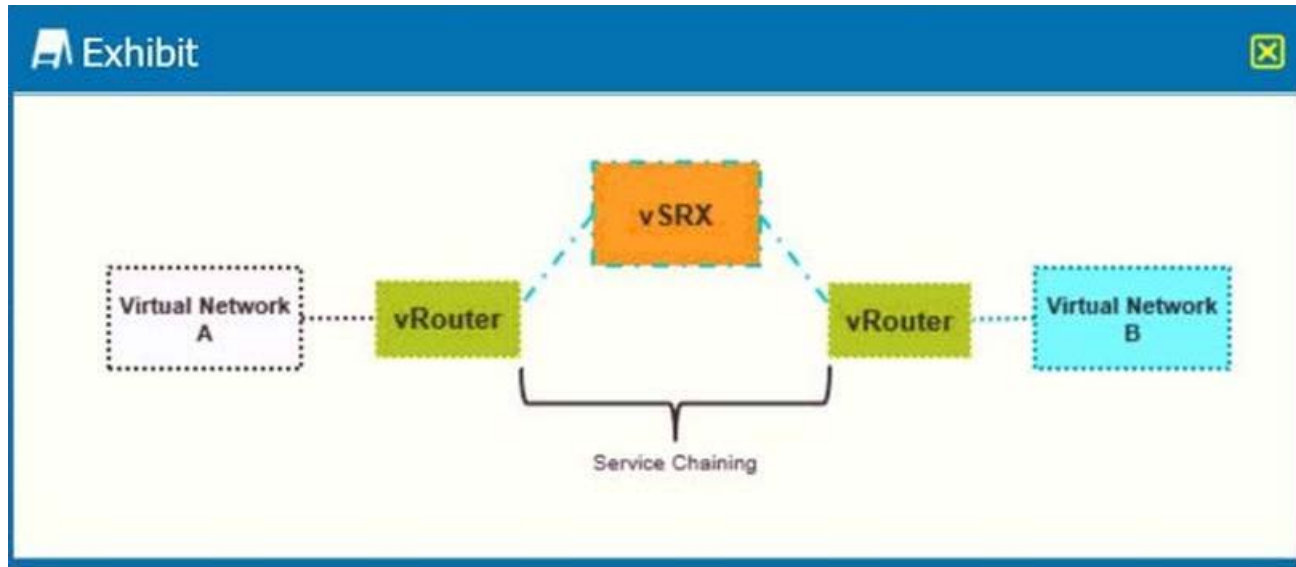
Referring to the exhibit, which role is the router device performing when implementing a PNF service chain?

- A. customer gateway
- B. service control gateway
- C. virtual private gateway
- D. multicloud gateway

Answer: A

Question: 179

Exhibit.



Referring to the exhibit, which statement is true about virtual networks A and B so that the vSRX can be used as a service instance in a transparent service chain?

- A. Virtual networks A and B must have the same CIDR addressing.
- B. Virtual networks A and B must be running on different host servers.
- C. Virtual networks A and B must be running on the same host server.
- D. Virtual networks A and B must have different CIDR addressing.

Answer: D

Question: 180

An OpenShift cluster operator wants to verify the health of the cluster network infrastructure.

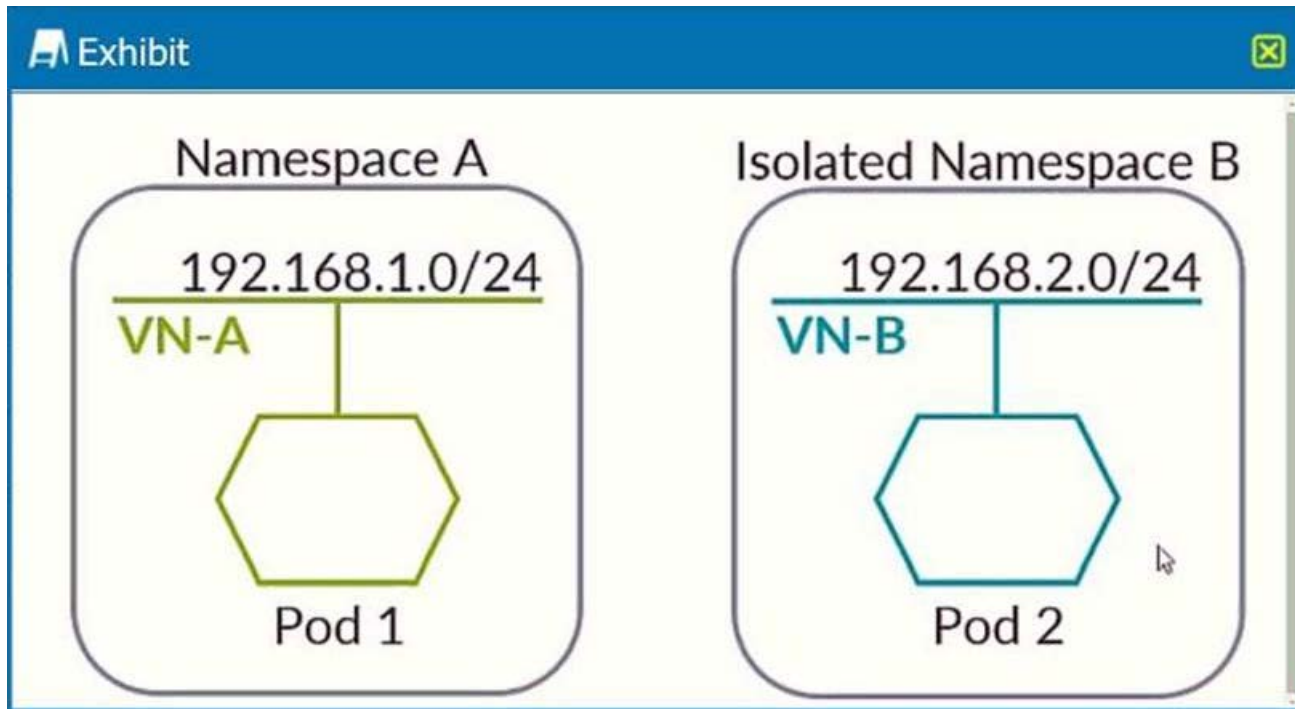
In this scenario, which method should the operator use to accomplish this task?

- A. Issue the `oc get daemonset -n contrail-system` command on the master node.
- B. Issue the `contrail-status` command on the master node.
- C. Issue the `contrail-status` command on the infrastructure node.
- D. Issue the `oc get pods -n contrail-system` command on the master node.

Answer: A

Question: 181

Exhibit.



Referring to the exhibit, which two statements about OpenShift namespace isolation with a Contrail network is true? (Choose two.)

- A. Pod 1 can communicate with Pod 2.
- B. Pod 1 cannot communicate with Pod 2.
- C. Pod 2 can communicate with Pod 1.
- D. Pod 2 cannot communicate with Pod 1.

Answer: A,B

Question: 182

Which two statements are correct when deploying or integrating OpenShift with Contrail Enterprise Multicloud? (Choose two.)

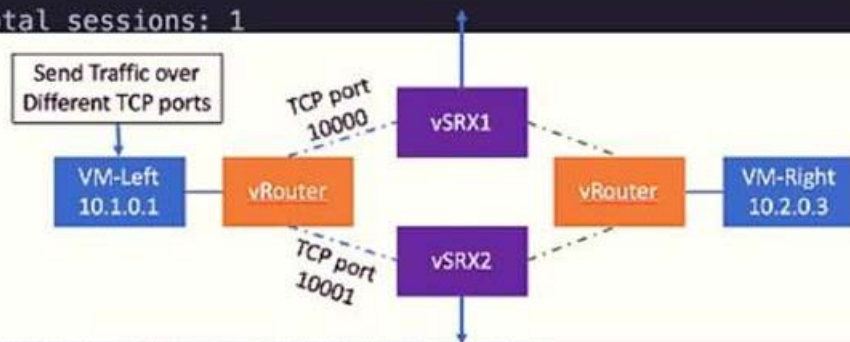
- A. Contrail Command for deployment is not supported.
- B. NFS for OpenShift logging is recommended.
- C. When using a load balancer, manually copy the htpasswd file into all of the master nodes.
- D. NTP is installed automatically and synchronized.

Answer: A,B,D

Question: 183

Exhibit.


```
lab@vSRX> show security flow session
Session ID: 76, Policy name: default-policy-00/2, Timeout: 2, Valid
  In: 10.1.0.3/52644 --> 10.2.0.3/10000:tcp, If: ge-0/0/1.0, Pkts: 1, Bytes: 78
  Out: 10.2.0.3/10000 --> 10.1.0.3/52644:tcp, If: ge-0/0/2.0, Pkts: 1, Bytes: 58
Total sessions: 1
```



```
lab@vSRX> show security flow session
Session ID: 417, Policy name: default-policy-00/2, Timeout: 2, Valid
  In: 10.1.0.3/42679 --> 10.2.0.3/10001:tcp, If: ge-0/0/1.0, Pkts: 1, Bytes: 78
  Out: 10.2.0.3/10001 --> 10.1.0.3/42679:tcp, If: ge-0/0/2.0, Pkts: 1, Bytes: 58
Total sessions: 1
```

Referring to the exhibit, which statement is correct about the configuration for the service chain?

- A. The service chain has an allowed address pair on the interfaces.
- B. The service chain is using a default setup.
- C. The service chain is set up for active/standby.
- D. The service chain is using a customized ECMP load balancer.

Answer: C

Question: 184

What are two methods to automate the creation of service chains using Contrail Enterprise Multicloud? (Choose two.)

- A. Heat templates
- B. Chef cookbooks
- C. Ansible playbooks
- D. Puppet manifests

Answer: A,C

Question: 185

Which two roles does Contrail Enterprise Multicloud place on IP Fabric devices in a centrally-routed environment? (Choose two.)

- A. Leaves are Layer 3 VXLAN gateways.
- B. Leaves are Layer 2 VXLAN gateways.
- C. Spines are Layer 2 VXLAN gateways.
- D. Spines are Layer 3 VXLAN gateways.

Answer: A,B

Question: 186

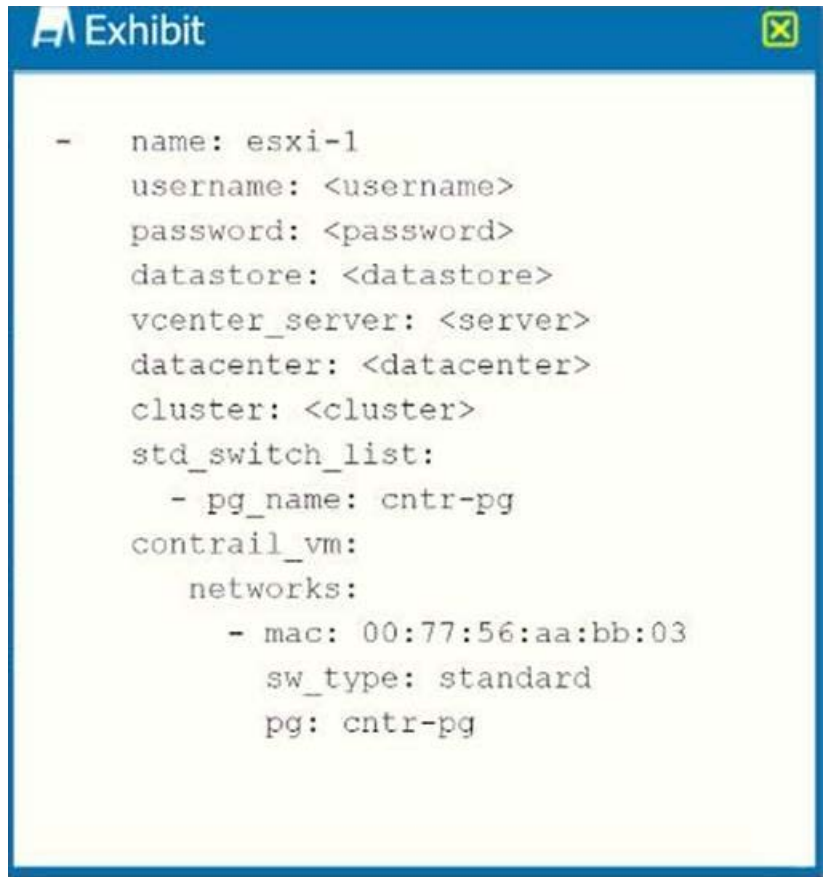
Contrail Virtual Network corresponds to which entity in VMware vCenter?

- A. distributed virtual switch
- B. standard virtual switch
- C. distributed port group
- D. standard port group

Answer: A

Question: 187

Exhibit.

An exhibit window titled "Exhibit" with a close button in the top right corner. It displays a configuration for an ESXi host named "esxi-1". The configuration includes fields for username, password, datastore, vcenter_server, datacenter, and cluster, all with placeholder values in angle brackets. It also lists standard switches under "std_switch_list" and a specific port group "cntr-pg" under "contrail_vm". The "cntr-pg" configuration includes a MAC address "00:77:56:aa:bb:03", a "sw_type" of "standard", and a "pg" of "cntr-pg".

```
- name: esxi-1
  username: <username>
  password: <password>
  datastore: <datastore>
  vcenter_server: <server>
  datacenter: <datacenter>
  cluster: <cluster>
  std_switch_list:
    - pg_name: cntr-pg
  contrail_vm:
    networks:
      - mac: 00:77:56:aa:bb:03
        sw_type: standard
        pg: cntr-pg
```

Referring to the exhibit, which component will be used for the underlay connectivity of the ESXi host?

- A. a host unique vSwitch
- B. the vSwitchO
- C. the cntr-vswitch
- D. a distributed vSwitch

Answer: A

Question: 188

You are connecting your on-premises data center to the Azure cloud.

In this scenario, which connection gateway service is implemented within the Azure cloud by Contrail Enterprise Multicloud?

- A. virtual private gateway
- B. multicloud gateway
- C. virtual network gateway
- D. customer gateway

Answer: A



SAMPLE QUESTIONS

*These questions are for demo purpose only. **Full version** is up to date and contains actual questions and answers.*

Killexams.com is an online platform that offers a wide range of services related to certification exam preparation. The platform provides actual questions, exam dumps, and practice tests to help individuals prepare for various certification exams with confidence. Here are some key features and services offered by Killexams.com:

Actual Exam Questions: *Killexams.com provides actual exam questions that are experienced in test centers. These questions are updated regularly to ensure they are up-to-date and relevant to the latest exam syllabus. By studying these actual questions, candidates can familiarize themselves with the content and format of the real exam.*

Exam Dumps: *Killexams.com offers exam dumps in PDF format. These dumps contain a comprehensive collection of questions and answers that cover the exam topics. By using these dumps, candidates can enhance their knowledge and improve their chances of success in the certification exam.*

Practice Tests: *Killexams.com provides practice tests through their desktop VCE exam simulator and online test engine. These practice tests simulate the real exam environment and help candidates assess their readiness for the actual exam. The practice tests cover a wide range of questions and enable candidates to identify their strengths and weaknesses.*

Guaranteed Success: *Killexams.com offers a success guarantee with their exam dumps. They claim that by using their materials, candidates will pass their exams on the first attempt or they will refund the purchase price. This guarantee provides assurance and confidence to individuals preparing for certification exams.*

Updated Content: *Killexams.com regularly updates its question bank and exam dumps to ensure that they are current and reflect the latest changes in the exam syllabus. This helps candidates stay up-to-date with the exam content and increases their chances of success.*

Technical Support: *Killexams.com provides free 24x7 technical support to assist candidates with any queries or issues they may encounter while using their services. Their certified experts are available to provide guidance and help candidates throughout their exam preparation journey.*

For More exams visit <https://killexams.com/vendors-exam-list>
Kill your exam at First Attempt....Guaranteed!